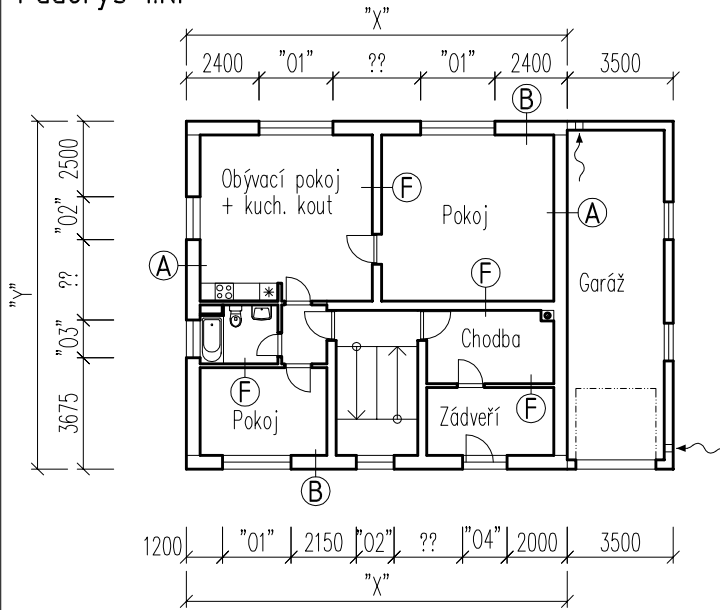
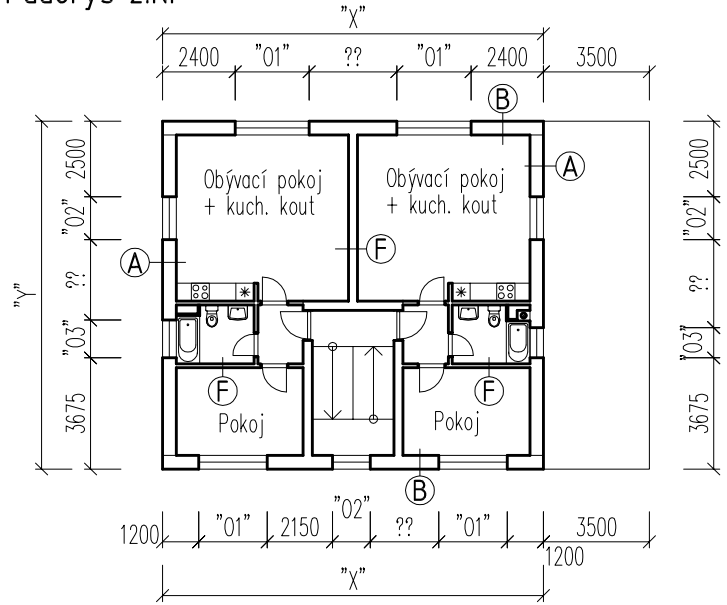


Zadání výpočtového objektu do předmětu BH10 – Tepelná technika budov

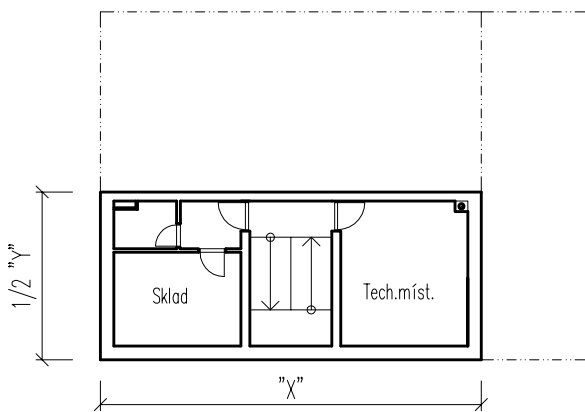
Půdorys 1.NP



Půdorys 2.NP

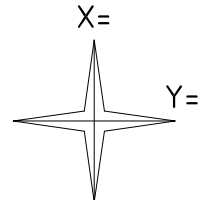


Půdorys 1.PP

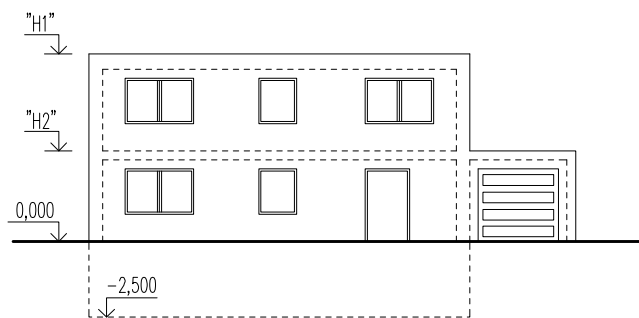


Teploty vzduchu

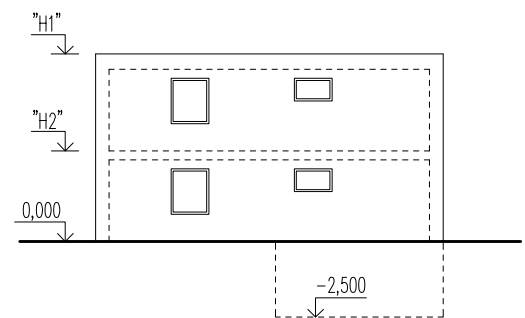
- $\theta_i = +20^\circ\text{C}$
- $\theta_{im} = +20^\circ\text{C}$
- $\theta_{gr} = +5^\circ\text{C}$ – teplota zeminy pod podlahou
- $\theta_i = +10^\circ\text{C}$ – teplota ve sklepě
- $\theta_i = +5^\circ\text{C}$ – teplota v garáži
- $\theta_e = -13^\circ\text{C}$ – var 1
- $\theta_e = -15^\circ\text{C}$ – var 2
- $\theta_e = -17^\circ\text{C}$ – var 3



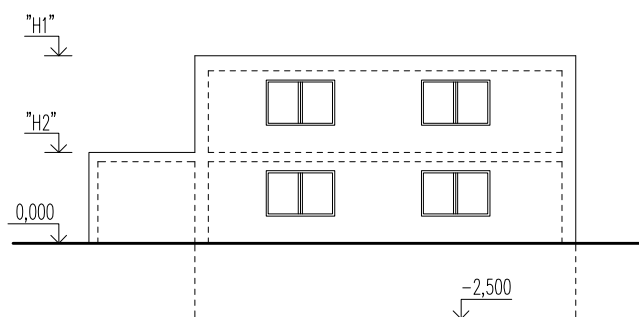
Pohled přední



Pohled boční



Pohled zadní



Pohled boční

